



# Promessa™ Series Hooks

Revised: 1/4/16

## Installation Procedures For The Following Models:

### Cone Hooks



T101-111-PC



T101-111-BN



T101-111-ORB



T101-112-PC



T101-112-BN



T101-112-ORB

### Tee Hooks



T101-211-PC



T101-211-BN



T101-211-ORB



T101-212-PC



T101-212-BN



T101-212-ORB

### Thumb Hooks



T101-311-PC



T101-311-BN



T101-311-ORB



T101-312-PC

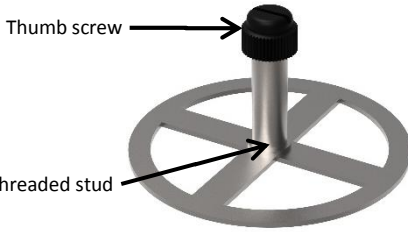


T101-312-BN



T101-312-ORB

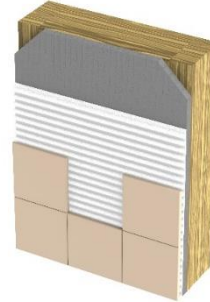
## STEP 1 Understand Fastener



- Prepackaged plastic thumb screws should not be removed until after grouting.

**Warning:** Each threaded stud is covered with a plastic thumb screw to prevent thin-set mortar from corrupting thread. Do not remove until after grouting.

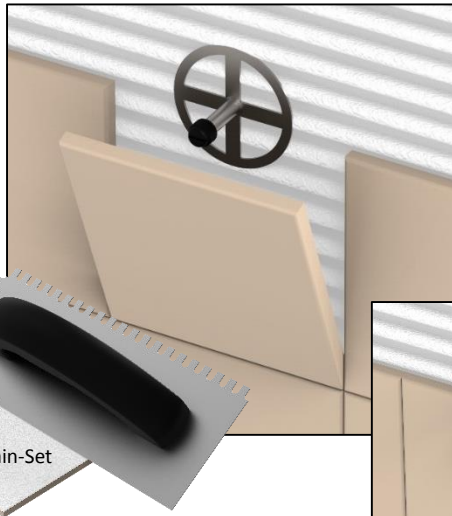
## STEP 2 Determine Hook Location



- Determine the wall surface where the PermaTile™ Fastener should be located.
- Apply thin-set mortar with no less than a 1/4" x 3/8" notch trowel.

**Warning:** Use only latex modified mortars that meet ANSI A118.4/A118.11 performance standard.

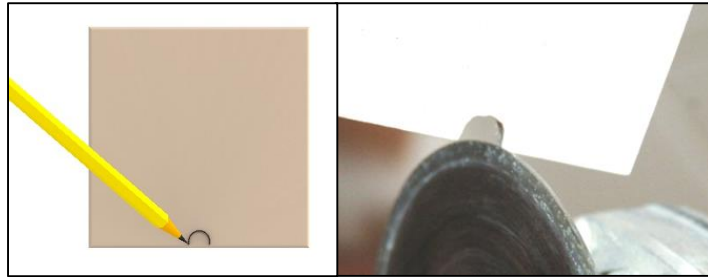
## STEP 3 Install PermaTile™ Fastener



- Key thin-set mortar into the backside of tile to ensure proper contact and adhesion.
- Press the PermaTile™ Fastener into the combed thin-set mortar at the predetermined location.
- Adjust as necessary, setting stud directly on tile edge.

**Note:** System will not work on tile thicknesses less than 5/32" or greater than 1/2"

## STEP 4 Mark & Notch Tile

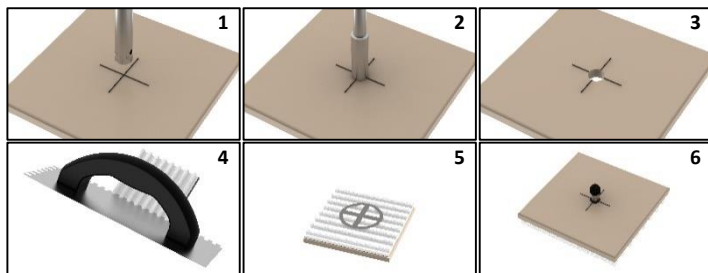


- Mark notch location.
- Using an angle grinder, remove enough material allowing 1/16" of adjustment side to side and up and down.

**Warning:** Notches and holes should not exceed 3/8" in diameter to ensure Hook trim has sufficient surface area during mounting.

### Technical Fact:

Procedures for installing PermaTile™ Fastener in the body of the tile. Use only 10mm diamond drill bit (core).



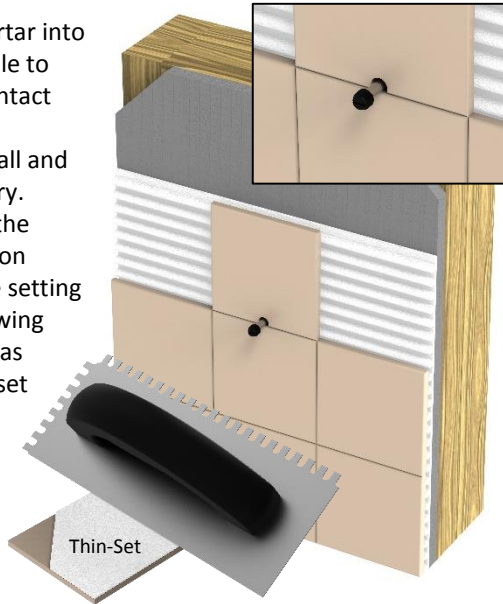
Promessa™ Series Hooks

Installation Procedures For All Hook Models:



**STEP 5 Install Notched Tile**

- Key thin-set mortar into the back side of tile to ensure proper contact and adhesion.
- Press tile into wall and adjust as necessary.
- This completes the fastener installation portion. Continue setting all other tile, allowing proper cure time as specified by thin-set manufacturer.



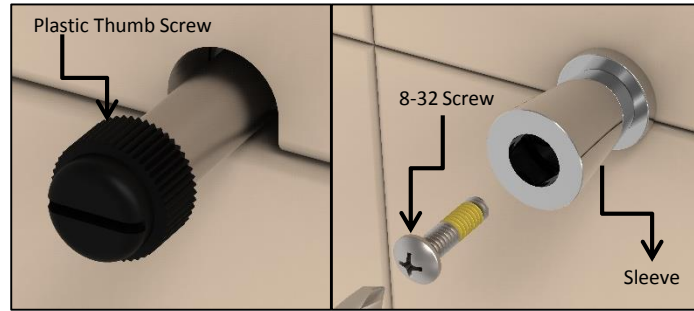
**Warning:** Do not proceed with accessory installation until thin-set mortar has met minimum curing requirements specified by manufacturer.

*Thank you for using our products!*

**TileWare Products**  
 PO Box 793, Hickory, NC 28603  
 Technical Support: 828-322-9273  
 Email: [info@tilewareproducts.com](mailto:info@tilewareproducts.com)  
[www.tilewareproducts.com](http://www.tilewareproducts.com)

**Hooks Parts List**

**STEP 6 Mount Sleeve & Screw**



**Warning:** Each threaded stud is covered with a plastic thumb screw to prevent thin-set mortar from corrupting thread. Do not remove until grouting is complete.

Carefully, turn 8-32 stainless steel screw. Cross-threading will require fastener removal.

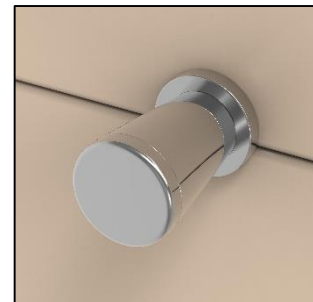
- Remove plastic thumb screw after grouting.
- Simply slip sleeve over threaded stud, insert 8-32 stainless steel screw through sleeve and attach.
- Using a #2 phillips head screw driver, attach screw firmly to tile wall.

**STEP 7 Attach Cap**



- Thread on Cap.

**STEP 8 Complete**



- Installation complete.

Model	Fastener quantity 1 per kit	Washer quantity 1 per kit	Sleeve quantity 1 per kit	Cap quantity 1 per kit	8-32 Screw quantity 1 per kit
<b>T101-111 or T101-112 Cone Hook Kits</b>	PT100-507	C220-006	C220-003	C220-005 or C220-012 Contemporary - Traditional	C200-013
<b>T101-211 or T101-212 Tee Hook Kits</b>	PT100-507	C220-006	C220-002	C220-005 or C220-012 Contemporary - Traditional	C200-013
<b>T101-311 or T101-312 Thumb Hook Kits</b>	PT100-507	NO WASHER REQUIRED	C220-004	C220-005 or C220-012 Contemporary - Traditional	C200-013