



**Model T200-001**  
ADA 18" Straight Grab (Contemporary)

**Model T200-002**  
ADA 18" Straight Grab (Traditional)

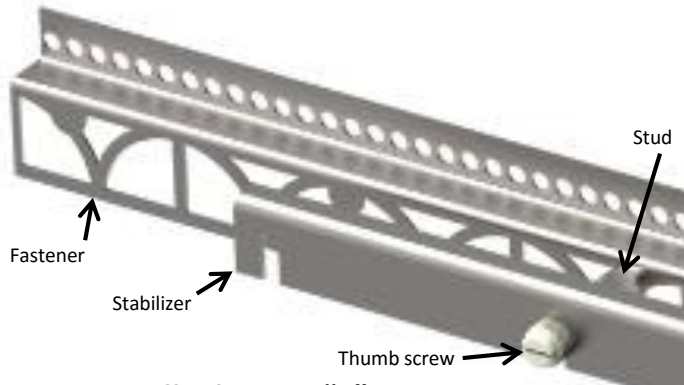


**STEP 1 Understand "Z" Fastener**

Each PermaTile™ Fastener is equipped with a stabilizing bracket. The bracket ensures that grab bar mounts properly. Remove stabilizer after thin-set has met minimum cure times specified by manufacturer.

**Warning:** Each threaded stud is covered with a plastic thumb screw to prevent thin-set mortar from corrupting threads. Do not remove until after grouting.

**Technical Fact:**  
Each PermaTile™ "Z" Fastener is constructed from high quality stainless steel materials. The welded fastener is equipped with (2) 10-24 internal threaded studs (only one pictured)



**STEP 2 Determine Location & Install Fastener**

- Determine where the PermaTile™ "Z" Fastener will be located.
- First apply a 1/4" bead of urethane caulk to underside of "Z" Fastener to waterproof.
  - Attach "Z" Fastener to wood studs with #8 x 2" wood screws (2-provided). Fastener **MUST** be mounted to 2 stud placements 16" on center.
  - After attaching fastener, apply a second bead of urethane caulk on top of tile board edge, covering entire edge including fastener.
  - Place tile construction board on top of fastener system and attach securely.

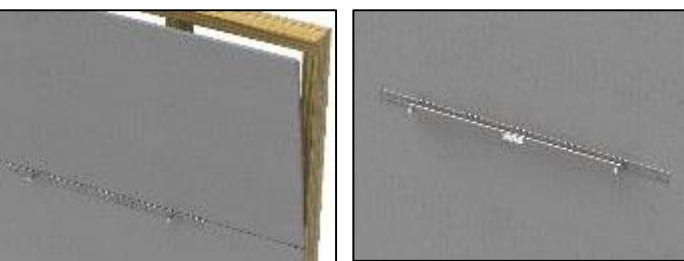
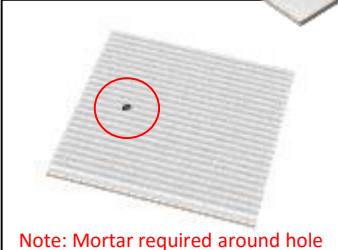
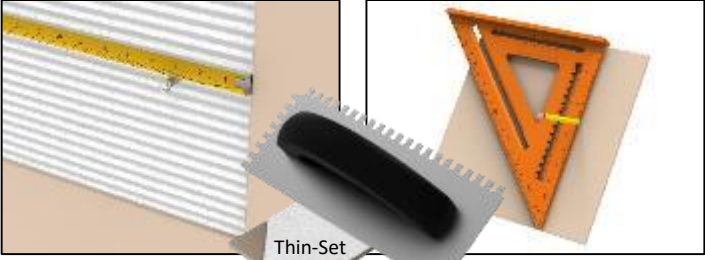
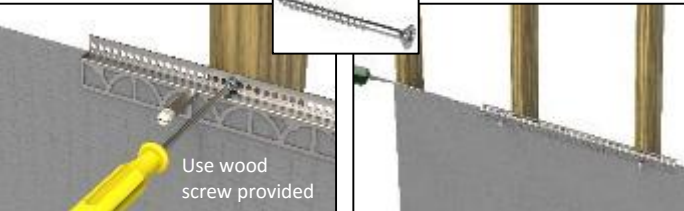
**Technical Fact:**  
Each PermaTile™ "Z" Fastener will work with all 1/2" thick cement, fiber and foam-core tile board materials. (Only use materials that meet ANSI specification for tile construction.)

**STEP 3 Install Tile over "Z" Fastener**

- Apply thin-set mortar with no less than a 1/4" x 3/8" notch trowel, key thin-set into perforations in "Z" Fastener.
- Measure location of threaded stud by marking tile or using a tape measure.
- Transfer marks using a square.
- Use only 10mm diamond drill bit (core), pre-drill all holes before applying thin-set mortar. Back-butter tile making sure sufficient mortar is around drilled hole.

**Warning:** Use only latex modified mortars that meet ANSI A118.4 or A118.11 performance standard. Notches or drilled holes should not exceed 3/8" in diameter to ensure trim has sufficient surface area during grab bar mounting. Inadequate mortar coverage around drilled or notched holes will result in tile damages when tightening bushing and mounting grab bar.

**Technical Fact:**  
When drilling glass tile always drill from both sides. Failure to do so will create blow-outs and weaken tile structure. Do not mount grab bar to glass tile where drilling has occurred on one side only.



**Note: System will not work on tile thicknesses less than 5/32" or greater than 1/2"**



# Victoria™ Series ADA 18" Grab Bars

## Installation Procedures For T200-001 & T200-002

### STEP 4 Remount Stabilizer

Remount stabilizing bracket as shown and **tighten thumb screws securely**. Use stabilizer to check if "Z" Fastener was installed level.

**Warning:** Do not proceed with accessory installation until thin-set mortar has met minimum curing requirements specified by manufacturer.

**Not using stabilizer will result in grab bar mounting failure**



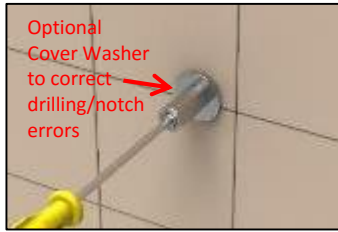
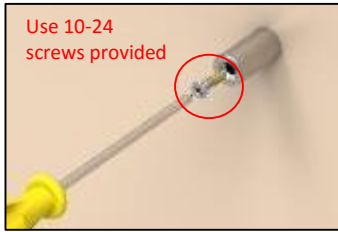
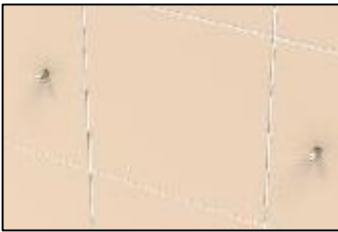
### STEP 5 Remove Stabilizer & Install Bushings

- Immediately proceed to accessory mounting after grouting is completed.
- Simply slip Bushing over hex studs. Position 6-32 threads down by placing index finger over threaded hole while slipping onto hex stud.
- Attach to hex studs using 10-24 stainless steel screws (see table to right). Hand tighten with #2 Phillips head screw driver.

**Technical Fact:**

Mortar coverage behind drilled hole will ensure bushing can be firmly mounted with 10-24 stainless steel screw. Screw is patched to prevent threads from reversing or loosening.

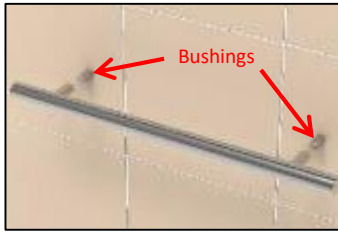
Grab Bar Screw Configuration Guidelines		Screws For Specific Tile Thicknesses:		10-24 x 3/4" Screw For Standard Build-up			10-24 x 1 1/4" Screw For Thicker Screens	
		5/32"	3/16"	1/4"	5/16"	3/8"	7/16"	1/2"
Thin-Set & Screenshot Build-up Thicknesses	1/16"							
	3/16"							
	3/8"							N/A



### STEP 6 Mount Grab Bar

- Each Grab Bar is drilled with 2 countersink holes that will match mounted bushing locations. Simply slip grab bar over bushings (Note: tolerances are precise so grab bar will feel snug when installing).
- Simply insert 6-32 stainless steel screws through countersink holes in grab bar and attach to threaded bushings.
- Using a #2 Phillips-head screw driver, attach screws firmly to grab bar. Loosely mount all screws first before firmly tightening.

**Warning:** Make sure screw and stud are parallel to avoid cross-threading. Turn carefully, cross-threading will require fastener removal.



**Thank you for using our products!**

**TileWare Products**  
 PO Box 793, Hickory, NC 28603  
 Technical Support: 828-322-9273  
 Email: [info@tilewareproducts.com](mailto:info@tilewareproducts.com)  
[www.tilewareproducts.com](http://www.tilewareproducts.com)

### Grab Bar Parts List

Grab Bar quantity 1 per kit	PermaTile™ "Z" Fastener quantity 1 per kit	Wood Screw quantity 2 per kit	Bushing quantity 2 per kit	Optional Cover Washer quantity 2 per kit	10-24 3/4" - 1 1/4" Screw quantity 2 each per kit	6-32 Screw quantity 2 per kit
A220-181 	PT100-514 	C200-026 	C220-021 	C220-023  <b>SOLD SEPERATELY</b>	C200-015 & C200-027 	C200-011 OR C200-012 